



MT GRAVATT SHOWGROUNDS PRECINCT:
A PLACE TO GATHER

**COMMUNITY CONSULTATION
DISCUSSION GUIDE**



“

Built on history and tradition, we foster genuine connections by hosting diverse events and shared experiences that enrich our community.

With a commitment to growth, sustainability, and trust, we ensure our showgrounds remain a respected and valued pillar for generations to come.

”



Mt Gravatt Showgrounds Precinct: A Place To Gather

The Mt Gravatt Showgrounds has been a central part of the local community since 1918, serving as a place for connection, celebration, and shared experiences for over 100 years. While it remains Crown land, it is cared for and managed by the Mount Gravatt Showgrounds Trust (the Trust), who are responsible for maintaining its legacy and ensuring it continues to meet the needs of the community.

The Mt Gravatt Showgrounds Precinct (Precinct) spans 11 hectares and includes a range of facilities such as the fenced oval, community buildings, parking areas, green spaces, covered market and entertainment areas, and internal roadways. Best known as the home of the annual Mt Gravatt Show, the Precinct also supports a wide variety of events, activities, and services throughout the year.

To ensure the Showgrounds remains a vibrant and valued space into the future, the Trust is updating its Master Plan. This is an opportunity to refresh the long-term vision for the Precinct - supporting its role as a community hub, while also ensuring financial sustainability and responsiveness to changing needs.

In developing this new vision, the planning team has drawn on historic records, community insights, and lessons from similar sites across Australia. This Discussion Guide outlines a set of preliminary Design Principles and Themes that are being considered to guide the future of the Precinct.

We're now seeking feedback from community members, stakeholders, and both current and potential users of the Precinct. Specifically, we want to better understand:

- Who currently uses, or could use, the Precinct, and how
- Your thoughts on the key themes guiding the Master Plan
- Your feedback on the draft design principles

Your input will help shape the future of the Mt Gravatt Showgrounds and ensure it continues to be a space that reflects and supports the community it serves.



Introduction

The Mt Gravatt Showgrounds Trust (Trust) is developing an updated Master Plan for the future of the Showgrounds Precinct. The Trust was created under *Mt. Gravatt Showgrounds Act 1988 (Act)* and is tasked with the responsibility to:

- Design and implement a plan and strategy for the development and use of the Precinct area.
- Develop and manage the Precinct, consistent with the Trust's purposes of showgrounds, park and recreation.
- Manage the funds required.

Aim Of The Project

The Trust seeks to develop a plan for the Showground Precinct with the clear intent of ensuring it continues to:

- Meet the needs of the Mt Gravatt community.
- Host the annual show,
- Provides parks and recreational access, and
- Ensure that any future design is valued by the community.



Context

In developing the Precinct, the Trust must be mindful of context within which it operates.

This includes:

- Compliance with all relevant legislation and regulations.
- Making the Precinct available for two weeks each year to host the annual Mt Gravatt Show (as required by the Act).
- Respecting existing contracts with organisations including (at present) the Minigolf, Markets, Men's Shed, Girl Guides, Rotary and sporting clubs.
- Be mindful of the impact that activities on the Precinct may have on immediate neighbours, for example noise and traffic.
- Ensuring sufficient funds are available to meet the ongoing operational costs and future commitments.



Design Principles

The following principles will guide the future design of the Precinct and any specific proposals for site enhancement.

CONSISTENT THEME

Create a consistent theme that reflects the ancient and modern history of the area. The Precinct should respect and reflect its Indigenous and community heritage and its role in promoting agriculture and building connections between urban and rural communities.

ENVIRONMENTALLY SUSTAINABLE

Future enhancements of the of the Precinct should be environmentally sensitive and sustainable.

SAFETY

Ensure the safety of people using the Precinct and include sufficient power, water and lighting.

FINANCIALLY SUSTAINABLE

Any enhancements should be financially and economically sustainable.

COMMUNITY VALUE

Any enhancements should be valued by the community.

COMMUNITY VOICE

Actively engage the local community and its institutions.

ACCESSIBILITY

Accessible for all people including all abilities with sufficient parking and access to public transport from both sides of Logan Road.

MULTI-PURPOSE FACILITIES

Allow for maximum usage and flexibility into the future.

COMMUNITY EDUCATION

Broadly support community education and understanding.

ENVIRONMENTAL RESPECT

Respect the existing natural and built environment on the Precinct and the surrounding community and should be sensitive to these considerations.

Themes

Analysis to date has identified four themes that may underpin the future design of the Precinct; Community Infrastructure, Social Infrastructure, Commercial Infrastructure and Environmental Infrastructure. This categorisation is used to help with clarity but recognises that there is considerable overlap and a particular proposal may meet multiple themes.

COMMUNITY INFRASTRUCTURE

The Precinct should provide infrastructure that meets the changing needs of the community and its activities, this includes the buildings and spaces that provide services, activities and opportunities. Examples may include:

Facilities for Meetings and Events

Multi-functional rooms and meeting areas that allow local community groups to meet in well-lit, air-conditioned facilities with easy accessibility and storage areas. For example:

- Indoor areas such as existing buildings, a covered market area and a possible function centre.
- Outdoor areas that may include facilities for sport, public art and performances.

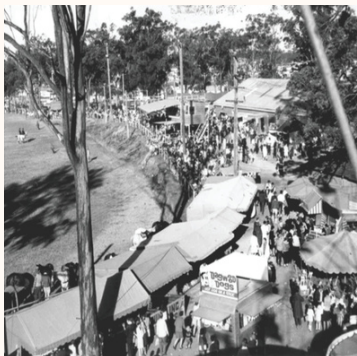
Facilities for Community Health and Wellbeing

Facilities to support community health and wellbeing including:

- Walking tracks with fitness stops.
- Bicycle paths for children to learn to ride and more experienced riders.
- iHeritage trail (perhaps along the walking track)
- Facilities for group exercise such as Tai Chi.

Major Incident and Disaster Management Support Centre

Facilities that may enable the site to be used in an emergency as an evacuation centre or disaster management and recovery location.



Themes

SOCIAL INFRASTRUCTURE

Comprising of buildings, spaces, services and networks that support the quality of life and wellbeing of communities. Example may include:

Regional Community Hub

The Precinct would serve as a community hub in which community organisations and individuals may foster connectedness and memories between people, to help foster community cohesion. It could become an attractive location for individuals or groups to enjoy the natural aspects and to enjoy art and recreational activities. Also to provide large event rooms that allow for gatherings of multiple community groups e.g. community art shows, health and wellbeing events.

Playground Facilities

That are accessible for all abilities and all ages. These may include sensory experiences and safe kid's areas. Consideration may also be given to facilities for older children including sporting facilities.

Physical Activities

Facilities that encourage physical activities including walking trails, dog walking paths, bike trails, physical exercise equipment, and sporting facilities.

Fostering of Creative Arts

Facilities that support the fostering of creative arts including performance art using existing resources and a potential outdoor performance centre/amphitheatre that may include a capacity for outdoor movies.

Outdoor Community Events

Enhancing facilities for events such as Diwali, kite flying competitions, paper plane competitions, dog shows, Rotary and Lions Club events.

Recognise Contributions to the Community

Memorials and other mechanisms that recognise contributions to the community and to the history of the site.

Community Connectedness

Facilities that support community connectedness including the Men's Shed and the possible creation of a community garden.

Themes

COMMERCIAL INFRASTRUCTURE

Describes building, spaces and activities that are used for commercial purposes and thus provide income to support the other community activities and to ensure the economic sustainability of the Precinct.

Examples may include:

Covered Marketplace

To support the existing markets and to be available for displays and other purposes.

Secure Parking and Storage Facility

That would be available for commercial purposes and also to support community organisations.

Office and Other Capabilities

For community organisations and limited commercial activities that are consistent with the general purposes of the Precinct.

Limited Commercial Activities

That contribute to economic sustainability and are complementary to the other purposes of the Precinct including recreational activities, dining and community support.

Function Facilities

Enhancement of current function facilities, including both buildings and bookable external sites for functions including weddings, special birthdays, commemorate events, government information sessions and presentations.

Outdoor Events

Enhancing facilities for events such as local circuses and shows in commercial sized tents, hosting large vehicles such as Blood Bank, Skin Cancer Foundation Truck, Jamie Oliver Ministry of Food Truck.

Other Community Infrastructure

That supports the economic sustainability and is complementary to the general purposes of the Precinct, which may include electric vehicle charging sites, community batteries, on-site advertising, and electronic communication infrastructure.

Themes

ENVIRONMENTAL INFRASTRUCTURE

Describes the structures, spaces and activities that seek to enhance the environmental value of the site including:

Green Spaces and Forest Preserves of Native Trees

That contribute to carbon capture, provide homes for native fauna, wildlife corridors and also provide a pleasing aspect for neighbours and the community more generally.

Sufficient Shade

Throughout the site to protect users from the effects of heat and sun.

Water Course Management

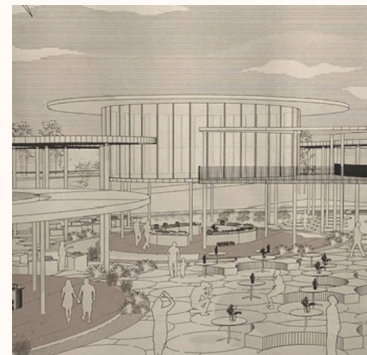
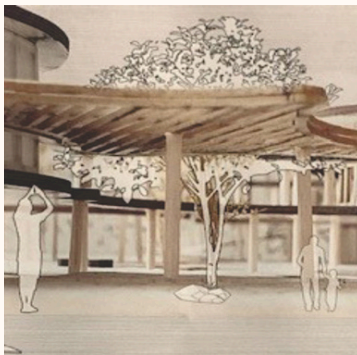
Water capture (roof top, surface and underground water), efficient use of water to ensure resilience and reduce the cost of external water purchases and water flow management to avoid flooding and maintain the utility of the site.

Electricity Capture and Storage

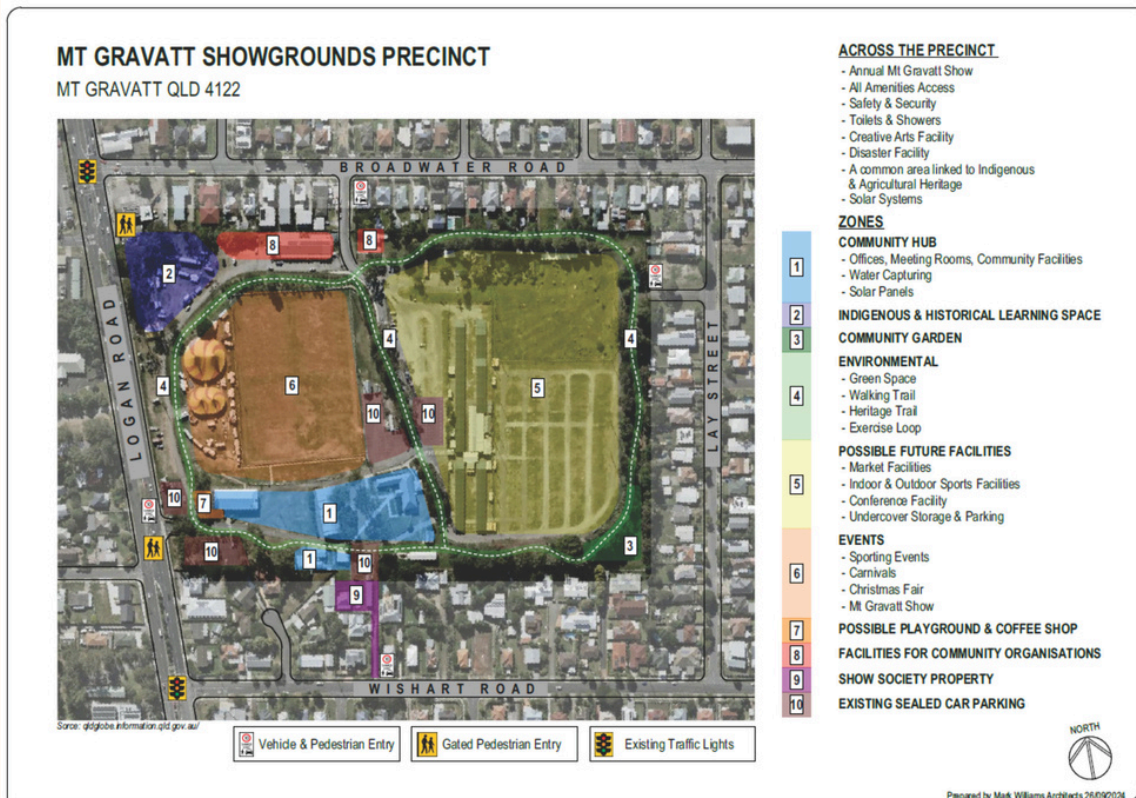
Using existing roof tops and including the potential for onsite batteries to reduce electricity costs and contribute to green energy.

Renewable Energy

Consider the use of the proposed covered marketplace as a mini “solar farm” to contribute to the broader need for renewable energy and also assist with economic sustainability of the site.



Concept Map





MOUNT GRAVATT SHOWGROUNDS

Connecting communities, inspiring celebration

HAVE YOUR SAY AT

www.mtgravattshowgrounds.org.au/have-your-say